



Eagle Express

SCHOOL WEEKLY NEWSLETTER

Phone: 413-423-3326

<http://www.erving.com>

SPOOKY EDITION

ERVING, MA

OCTOBER 27, 2023



Tuesday, Oct 31

All School Sing

2:30 pm



Wednesday, Nov 1

Savings Makes 'Cents'

Thursday, Nov 2

Bingo for Books

5:30 pm

Thursday, Nov 9

Veterans Day Assembly

10 am

Friday, Nov 10

Veterans Day

NO SCHOOL

Monday, Nov 13

Picture Re-Takes

Tuesday, Nov 14 -

Thursday, Nov 16

Conferences, PK - 6

EARLY DISMISSAL 1:15

NO AFTER SCHOOL

Tuesday, Nov 21

School Committee Meeting

7:00 pm

Wednesday, Nov 22 -

Friday, Nov 24

Thanksgiving Break

NO SCHOOL



Fall is in full swing in Grade Two!



We're deep into our earth science unit on Landscapes and investigating how the land is shaped over time. We're building mountains, canyons, and thinking deeply about how the earth is always changing.

Students in both classes have been sharing learning moments. Recently, they've joined forces to share in research projects, create art, and explore big mathematical ideas. When we put our heads together, it's clear we make a great team.

Enjoy the weekend!



Continued on next page...



Continued on next page...



Continued on next page...



November-Breakfast 2023

Alt	Monday	Tuesday	Wednesday	Thursday	Friday
Assorted cereal, fruit & milk			1 Bagel w/cream cheese, apple & milk	2 Assorted cereal, assorted fruit cup, juice & milk	3 Assorted muffins, yogurt, assorted fruit cup, juice & milk
	6 Assorted cereal, banana & milk	7 Waffles, syrup, assorted fruit cup, juice & milk	8 Bacon, egg & cheese on an English muffin, apple & milk	9 Assorted cereal, assorted fruit cup, juice & milk	10 Veterans Day Observed No School
	13 Assorted cereal, banana & milk	14 Pancakes, syrup, assorted fruit cup, juice & milk	15 Bagel w/cream cheese, apple & milk	16 Assorted cereal, assorted fruit cup, juice & milk	17 Assorted muffins, yogurt, assorted fruit cup, juice & milk
	20 Assorted cereal, banana & milk	21 French toast, syrup, assorted fruit cup, juice & milk	22 Thanksgiving Recess No School	23 Thanksgiving Recess No School	24 Thanksgiving Recess No School
	27 Assorted cereal, banana & milk	28 Waffles, syrup, assorted fruit cup, juice & milk	29 Bagel w/cream cheese, apple & milk	30 Assorted cereal, assorted fruit cup, juice & milk	Dec. 1 Assorted muffins, yogurt, assorted fruit cup, juice & milk

All sandwiches are made using whole grain bread. Each lunch is served with a choice of 1% white, skim, 1% milk & low fat chocolate (children 5 & under can only be offered white milk skim or 1%). All meals are subject to change without notice.

All meals are served w/fruit. Breakfast requires grain, fruit & milk. Lunch is served with a grain, protein, fruit, vegetable & milk. **If your child requires milk for a home meal the charge is .50 cents.**

THIS INSTITUTION IS AN EQUAL OPPORTUNITY PROVIDER

*WG = whole grain

*HM = homemade

*fixings = sour cream, salsa, lettuce shredded cheese

November-Lunch 2023

Alt	Monday	Tuesday	Wednesday	Thursday	Friday
Salad bowl w/cottage cheese, breadstick, fruit & veg of the day & milk	Oct. 30 Chicken & gravy over noodles, seasoned broccoli, diced peaches & milk	Oct. 31 Cheese quesadilla, corn & black bean salad, mandarin oranges & milk	1 Chicken patty on a wg roll, steamed carrots, fresh fruit & milk	2 Hamb/cheeseburger, oven fries, applesauce & milk	3 Breakfast pizza, wax beans, fresh fruit & milk
Turkey & cheese sandwich w/fruit & veg of the day & milk	6 Chicken nuggets, brown rice, broccoli, mandarin oranges & milk	7 Soft beef taco w/salsa, cheese, corn & black bean salad, fresh fruit & milk	8 Homemade chicken noodle soup, toasted cheese, carrots, peaches & milk	9 Salisbury steak w/mashed potato, wg bread, fresh fruit & milk	10 Veterans Day Observed No School
Ham & cheese sandwich w/fruit & veg of the day & milk	13 Seasoned chicken, steamed brown rice, broccoli, mandarin oranges & milk	14 Chicken fajita w/sour cream, salsa, cheese, lettuce, 3 bean salad, applesauce & milk	15 WG pasta w/meat sauce, parm cheese, sliced carrots, peaches & milk	16 Turkey, mashed potato w/gravy, corn, roll, fruit, desert & milk	17 Make your own pizza, fresh fruit, green beans & milk
Chicken salad sandwich w/fruit & veg of the day & milk	20 Turkey, bacon & cheese wrap w/lettuce, broccoli, pineapple & milk	21 Nachos w/beef & cheese, seasoned black beans, peaches & milk	22 Thanksgiving Recess No School	23 Thanksgiving Recess No School	24 Thanksgiving Recess No School
Salad bowl w/cottage cheese, breadstick, fruit & veg of the day & milk	27 Chicken nuggets, wg steamed rice, broccoli, mandarin oranges & milk	28 Cheese quesadilla, corn & black bean salad, peaches & milk	29 Tomato soup, ham & cheese sandwich, carrots, diced pears & milk	30 Breakfast for lunch w/pancakes, syrup, home fries, turkey sausage, fresh fruit & milk	Dec. 1 Sliced pizza green beans, fresh fruit & milk

All sandwiches are made using whole grain bread. Each lunch is served with a choice of 1% white, skim, 1% milk & lowfat chocolate (children 5 & under can only be offered white milk skim or 1%). All meals are subject to change without notice.

All meals are served w/fruit. Breakfast requires grain, fruit & milk. Lunch is served with a grain, protein, fruit, vegetable & milk. **If your child requires milk for a home meal the charge is .50 cents.**

THIS INSTITUTION IS AN EQUAL OPPORTUNITY PROVIDER

*WG = whole grain

*HM = homemade

*fixings = sour cream, salsa, lettuce shredded cheese



All Veterans are cordially invited to attend, and be recognized for their service, at our

VETERANS DAY PROGRAM

Thursday, November 9, 2023
9:00 coffee hour (no food will be served)
10:00 Assembly

Erving Elementary School
28 Northfield Road
Erving, MA 01344

Please R.S.V.P. with Pat Winn at 413-423-3326,
or via email at jennifer.smith@erving.com

BINGO

for BOOKS

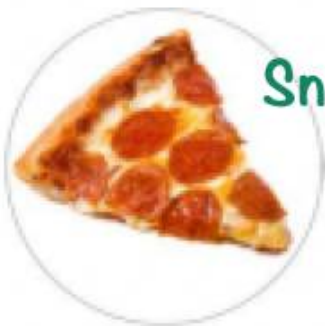
First card
free!

Thursday
November 2nd
5:30pm-6:30pm

Cards
\$1 ea.

Cafeteria

Snacks and pizza for sale!



Brought to you by P.I.E.E. Proceeds benefit the students of Erving Elementary School

ERVING PUBLIC LIBRARY

TEENS:

Come tell us what
YOU want here at the library...
while enjoying a FREE
ice cream sundae!



Looking for YOUR ideas on:

- future teen events
- stuff you can check out at the library
- how the Teen Room should work

**MONDAY,
NOVEMBER 13TH
3:30-5PM**

If coming from TFHS,
take Bus Route A with a
parent/guardian note if needed!



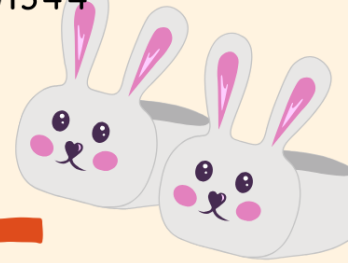
The Library's
Teen Webpage



 SCAN ME

2 Care Drive, Erving, MA 01344
library@erving-ma.gov
413-423-3348

ERVING PUBLIC LIBRARY
2 CARE DRIVE, OFF ROUTE 63, ERVING, MA 01344



PJ STORYTIME

WITH U28 COMMUNITY NETWORK FOR CHILDREN

2nd Thursdays*
6-6:45 pm:

October 12: Elephant, Piggie & Pigeon Too!

November 16: Pete the Cat and friends

January 11: Hurry, Hurry Drive the Fire Truck

February 8: Let It Snow

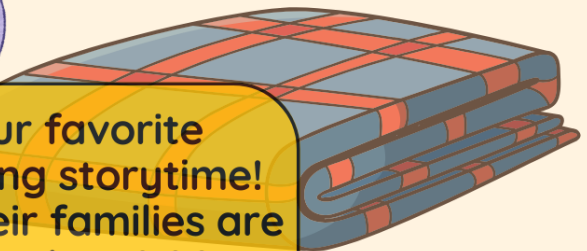
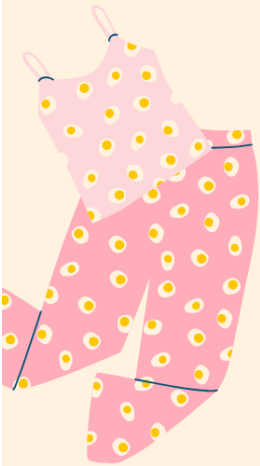
March 14: Teddy Bear Picnic

Registration
requested for
planning
purposes



*except for November
due to the holiday

Use QR Code to Register or
[https://form.jotform.com/
231995324350154](https://form.jotform.com/231995324350154)



Come join us in your favorite
pajamas for an evening storytime!
Young children and their families are
welcome! Story themed-activities
sponsored by CNC.



Contact the Erving Public Library or
CNC at budine@erving.com with any questions



THE UNION #28 COMMUNITY NETWORK FOR CHILDREN PROGRAM IS FUNDED BY THE COORDINATED FAMILY AND COMMUNITY ENGAGEMENT (CFCE) GRANT AWARDED TO THE UNION #28 SCHOOLS BY THE MASSACHUSETTS DEPARTMENT OF EARLY EDUCATION AND CARE, AND DONATIONS FROM THE COMMUNITY.



Families in Nature with the Hitchcock Center

Interactive, in-person family program providing inquiry based environmental and outdoor education for small groups to explore nature in the fall. Each session includes movement, song, nature exploration and a story book with a focus on learning from nature. Program best for children 2 - 6 years of age with an adult.

Katie Koerten, Educator at the Hitchcock Center will be facilitating the programs. This program will include 3 sessions:

****REGISTRATION REQUIRED- Group size limited.**

Registration link: <https://form.jotform.com/212215759871158>

Wednesdays, 1:30pm

We will meet at the Quabbin Overlook, BEHIND the New Salem Fire Station at 33 South Main St, New Salem. FOLLOW the signs!

- September 13th, Colors of Nature
- October 18th, Squirrel Stories
- November 1st, You Are A Raccoon!



Contact Gillian @ CNC with any questions 413-422-0170 (call/text)

"Funded by a grant from the New Salem Cultural Council, a local agency supported by the Massachusetts Cultural Council, offered in collaboration with the Community Network for Children a program funded by the CFCE grant from the MA Department of Early Education and Care, and the New Salem Library.



Hitchcock Center
EDUCATION FOR A HEALTHY PLANET





Union 28 Community Network for Children Program September - December 2023

The Union #28 Community Network for Children program is funded by the Coordinated Family and Community Engagement (CFCE) grant awarded to the Union #28 Schools by the Massachusetts Department of Early Education and Care, Union 28 schools and donations from the community.



	Monday	Tuesday	Wednesday	Thursday	Friday	Saturday	Sunday
OCTOBER 	Shutesbury Tales & Tunes @M.N. Spear Mem Library @10am. 2nd	New Salem Tales & Tunes @ New Salem Library @10am 3, 10, 17, 24, 31	Wendell Library Playgroup @10am 4, 11, 18, 25 Leverett Library Playgroup @10:30am 4, 11, 18, 25	CNC Children's Closet 8:00am-Noon 5, 12, 19, 26 PJ StoryTime @ Erving Public Library 6:00-6:45pm 12th	Shutesbury Tales & Tunes @ Shutesbury Elementary School @10am 13, 20, 27	Visit the Wendell Free Library on Saturdays from 10-3!	Family Playtime 10:00-11:30 @Erving Elementary School 22nd
NOVEMBER 		New Salem Tales & Tunes @ New Salem Library @10am 7, 14, 21, 28	Wendell Library Playgroup @10am 1, 8, 15, 22 Leverett Library Playgroup @10:30am 1, 8, 15, 22	CNC Children's Closet 8:00am-Noon 2, 9, 16, 30 PJ StoryTime @ Erving Public Library 6:00-6:45pm 16th	Shutesbury Tales & Tunes @ Shutesbury Elementary School @10am 3, 17	Visit the Leverett Library on Saturdays from 10-3!	Family Playtime 10:00-11:30 @Erving Elementary School 19th
DECEMBER 	Visit the M.N. Spear Memorial Library on Mondays from 11-1 and 3-6!	New Salem Tales & Tunes @ New Salem Library @10am 5, 12, 19	Wendell Library Playgroup @10am 6, 13, 20 Leverett Library Playgroup @10:30am 6, 13, 20	CNC Children's Closet 8:00am-Noon 7, 14, 21	Shutesbury Tales & Tunes @ Shutesbury Elementary School @10am 1, 8, 15, 22	Visit the New Salem Library on Saturdays from 10-2!	Family Playtime 10:00-11:30 @Erving Elementary School 17th
	M.N. Spear Memorial Library 10 Cooleyville Rd Shutesbury	New Salem Library 23 S Main St New Salem	Leverett Library 75 Montague Rd Leverett Wendell Library 7 Wendell Depot Rd Wendell	Children's Closet 4 Montague Rd, Leverett Erving Public Library 2 Care Drive, Erving	Shutesbury Elementary School 23 W Pelham Rd Shutesbury	We love our local libraries!	Erving Elementary School 28 Northfield Rd Erving



QR Code Registration

Contact the Community Network for Children. 413-422-0170 call/text budine@erving.com Most programs are drop-in with registration optional. Special events marked with * require registration. <https://form.jotform.com/212215759871158>

Please note: Ongoing programs may not occur during school vacations or holidays. Please check the schedule! If inclement weather is a concern, contact CNC, check Facebook or the CNC Website for info.

Find us on